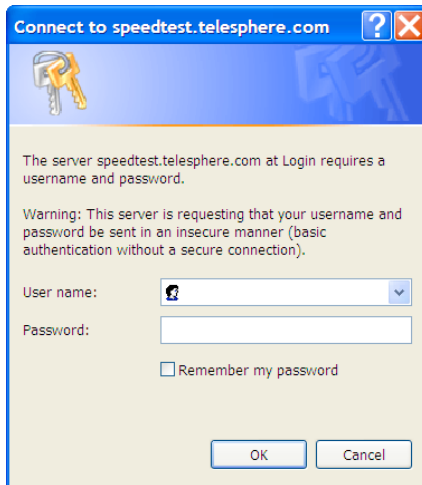
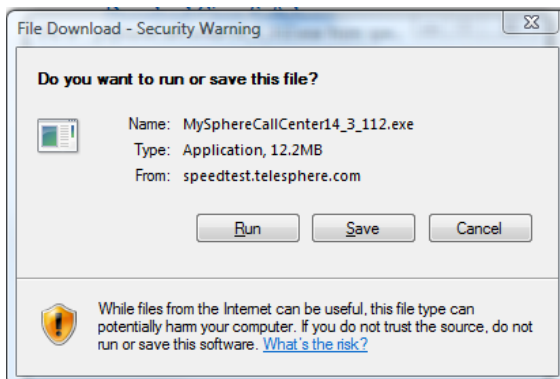


MySphere Call Center Installation Instructions

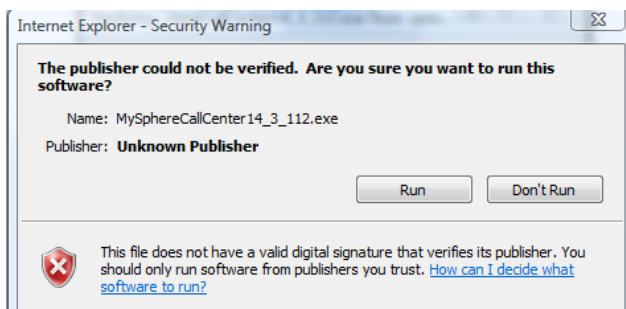
1. Launch Internet Explorer and in the address bar type the following url: <http://speedtest.telesphere.com>. Scroll down and in the right column, click on “Download Telesphere Call Center”. The “Login” box will appear.



2. “User Name” field, enter “telesphere”, “Password” field, enter “oursphere”
3. Click “OK,”

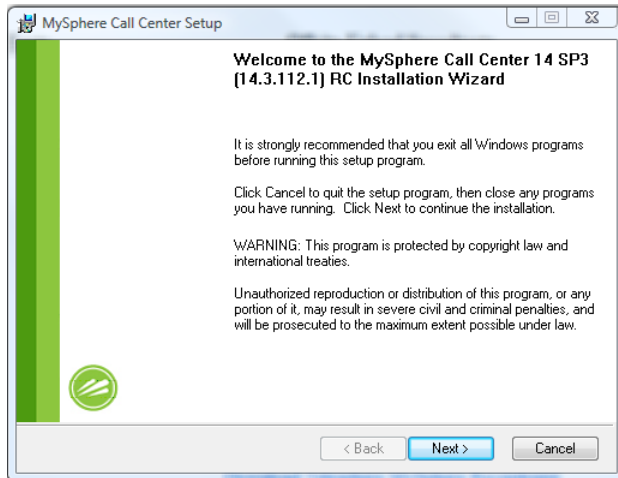


4. Click “Run”. The “Security Warning” window will appear.

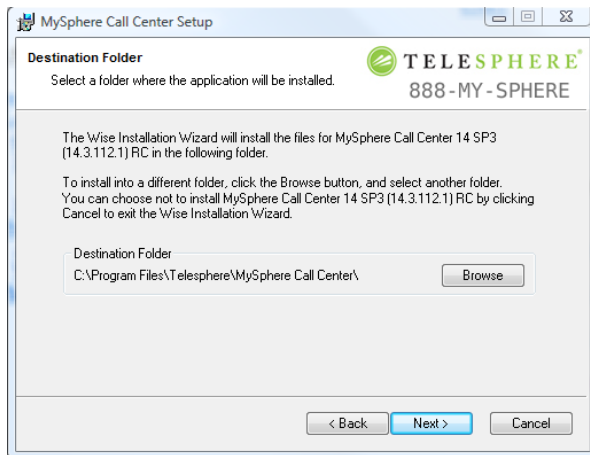


5. Click “Run”.

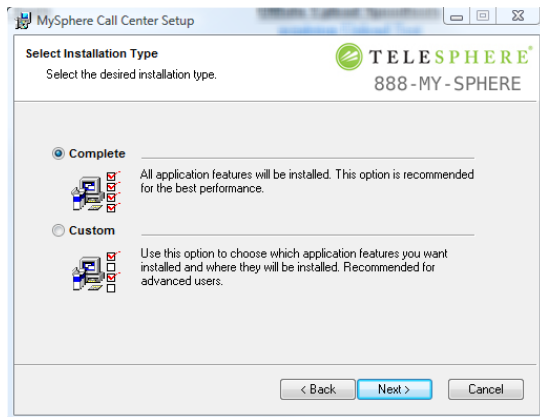
6. After you click “Run,” the “Installation Wizard” window will appear: Click “Next”



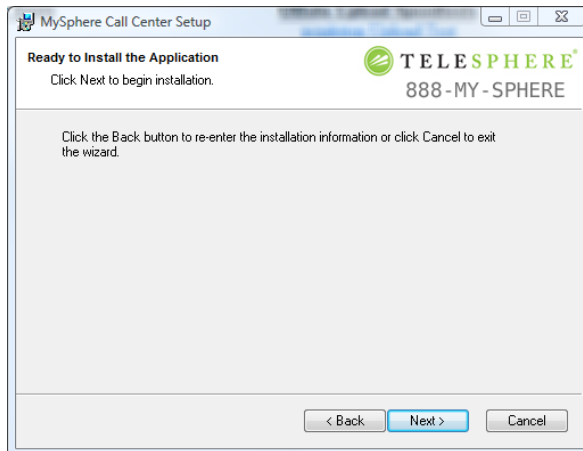
7. The “Destination Folder” window will appear. Click “Browse” to search and select a different destination, or click “Next” to save the file in the current destination folder.



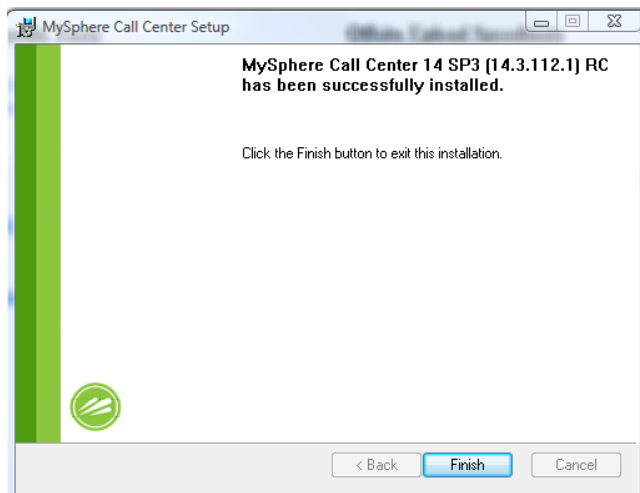
8. Click “Next”.



9. Click “Next,”



10. To complete the install, click “Finish”.



11. Once the installation is complete, go to your start menu, All Programs, locate the Telesphere MySphere Call Center program and create a short cut icon on your desktop.