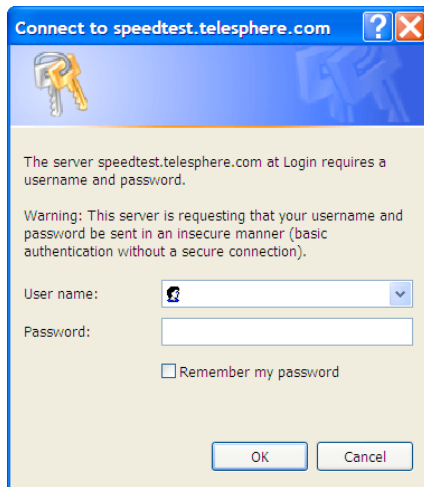
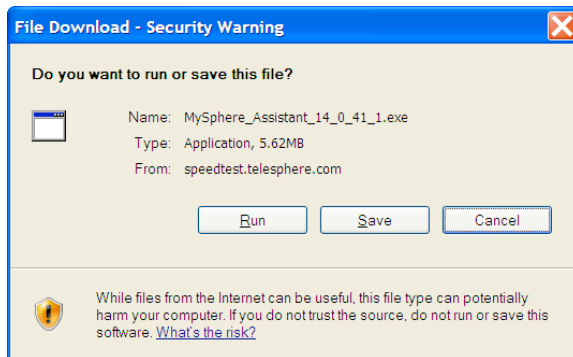


MySphere Assistant Installation Instructions

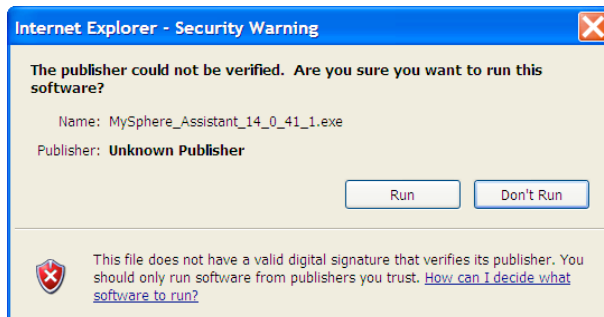
1. Open up Internet Explorer and go to the following website: <http://speedtest.telesphere.com>
Scroll down and click on “[Download Telesphere MySphere Assistant](#)”. The following box will appear.

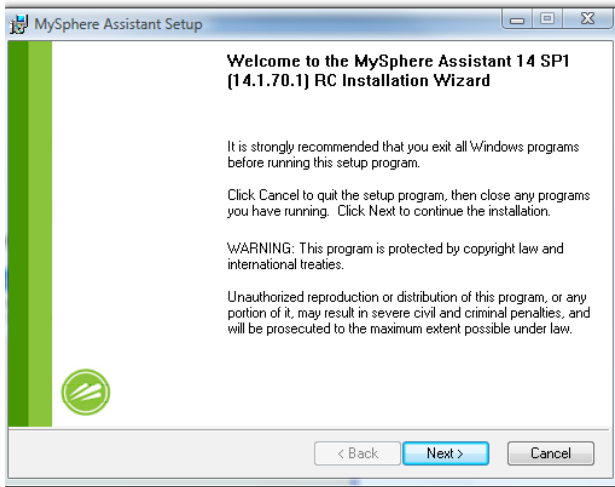


2. “User Name” field, enter “telesphere”, “Password” field, enter “oursphere”
3. Click “OK,”

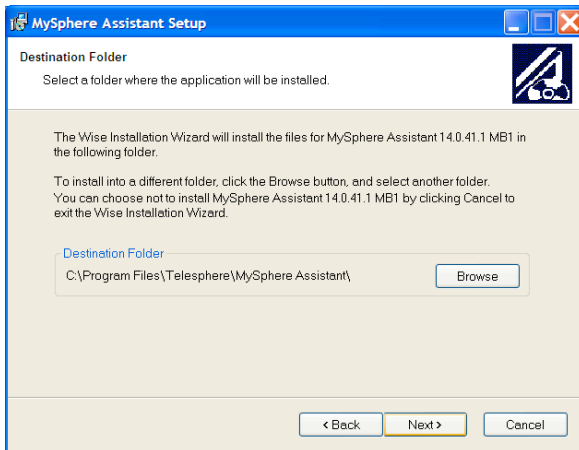


4. Click “Run”
Wait until the download is complete.
5. Once the download is complete, click “Run”.

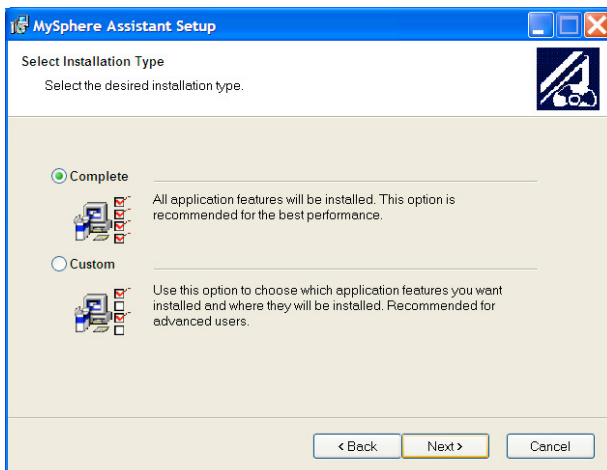


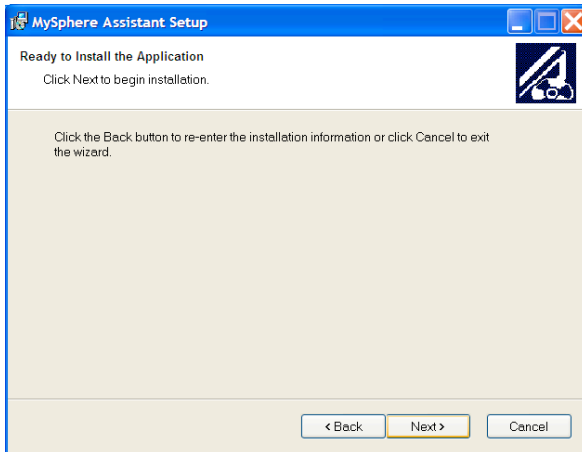


6. After you click "Run," the Installation Wizard window will appear: Click "Next"

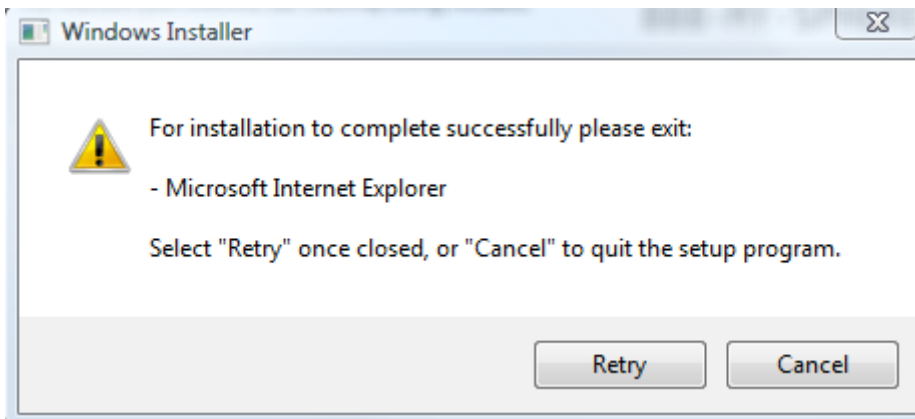


7. Click "Next".

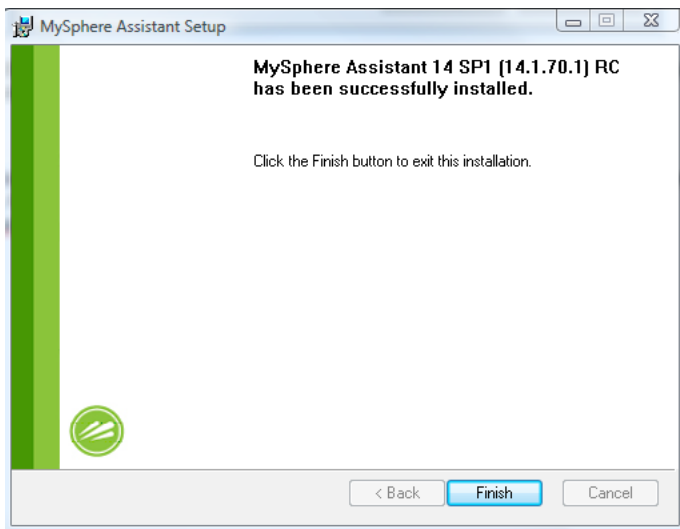




8. Click "Next,"



9. Before you finish installation, all applications of Microsoft Outlook and Internet Explorer must be closed down. After closing, click "Retry".



10. Click "Finish". Once the installation is complete, launch Internet Explorer and Microsoft Outlook to begin using the exciting features Telesphere offers. Once open, the Assistant Toolbar will appear at the top of the page.